



SonoSpeech

Ultrasound for speech

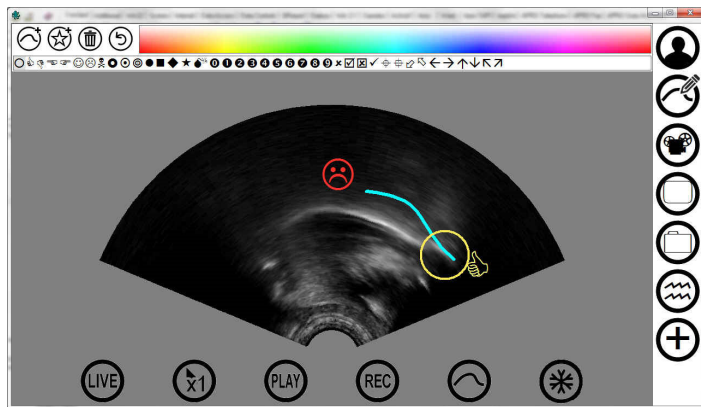
Follow us to find out more



@SonoSpeech



Radius 20mm; Frequency 4-8MHz; Max FOV 92°



*Simple, intuitive interface*

Designed to be compact and silent for clinical use. SonoSpeech is a unique clinical app provides live visual biofeedback of tongue movement for all speech sounds and includes template target tongue shapes for each segment.

Key Features:

- **Portable:**
  - Ultrasound 106x105x21mm; 0.26kg
  - 4-8MHz Probe handle 104mm 0.3kg
  - Tablet eg. Microsoft Surface Pro 0.8kg
  - Total Weight 1.3 kg
- **Mobile:** Everything powered by tablet battery (1.5Hrs)
- **Silent:** No fan noise, unlike many other systems
- **4-8MHz Convex Probe:** Short 20mm radius probe with large 92° field of view (FOV) suitable for adults and children.
- **SonoSpeech Speech Therapy Visual Feedback Software** Touch controlled application providing simple live dynamic ultrasound image with graphical overlays to highlight palate position and target constrictions; template videos of sound segments to demonstrate tongue configurations; audio recording and playback.
- **Requires Microsoft surface pro 4 i5 tablet or equivalent [not included]** Not Mac compatible.

## Accessories

- **Optional microconvex probe:** 5-8MHz, 10mm radius probe.(EU only, available in US 2017)
- **Optional convex probe:** 2-4MHz, 20mm radius probe.(EU only, available in US 2017)
- **Optional headset mounted probe:** Hands free stabilised probe position provided by headset means tongue image is consistent and easier to interpret. (available 2017)

\*Approximate price for ultrasound with one probe and SonoSpeech application; excludes tablet, import duty and tax.

[This configuration uses the tablet built in microphone. Audio cannot be synchronized precisely. Not recommended for research. For a research version of this system with precise automatic synchronization and analysis software please enquire.]

Email: [awrench@articulateinstruments.com](mailto:awrench@articulateinstruments.com) - [www.articulateinstruments.com](http://www.articulateinstruments.com) - Tel/Fax. +44 131 474 0000/0001

Address: Articulate Instruments Ltd, Queen Margaret Campus, Queen Margaret University Drive, Musselburgh, East Lothian EH21 6UU UK

Rev Jan 2017